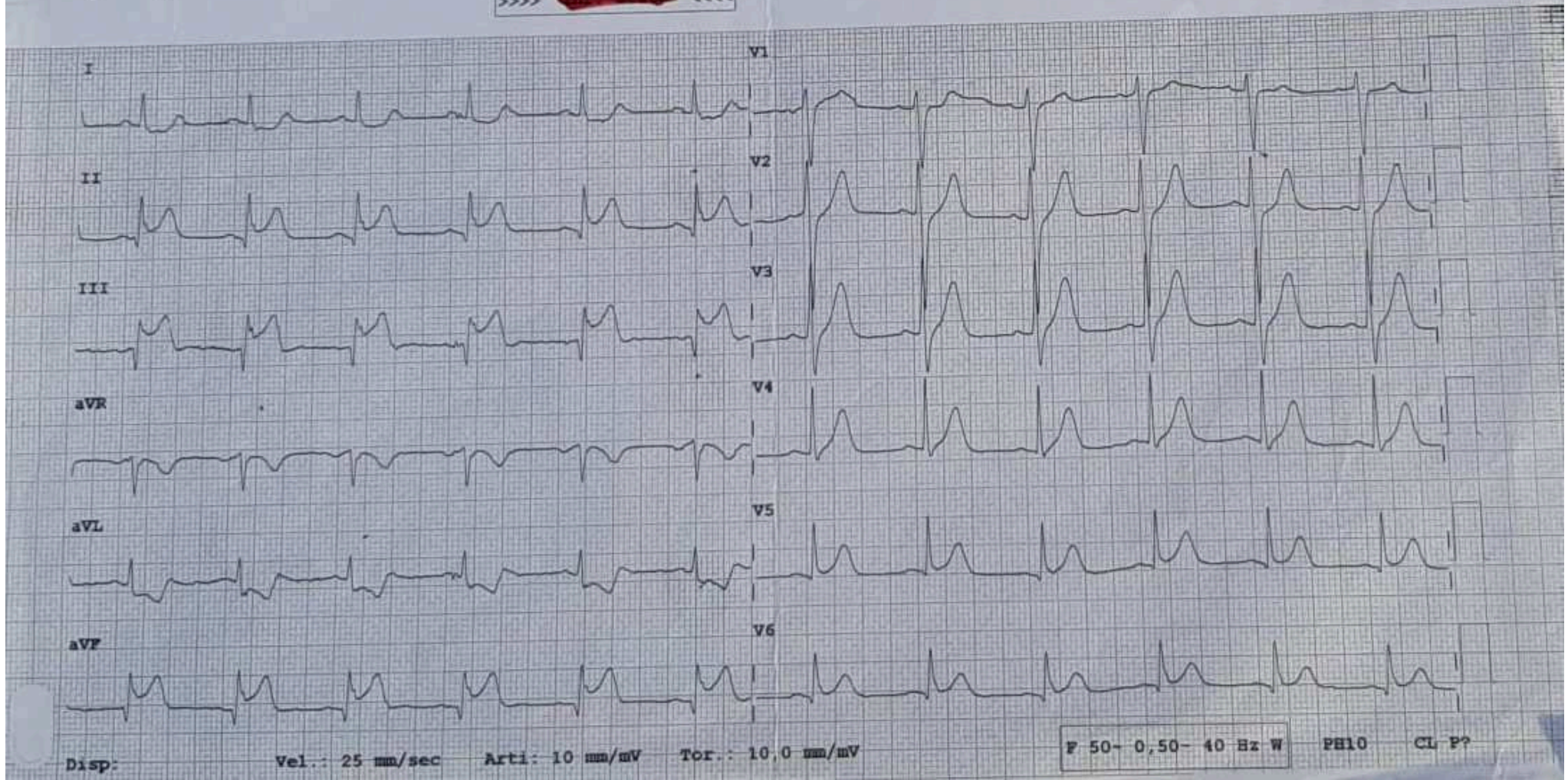


Nasc. 21/11/1963

13/12/2016 16:21:00  
Masc.

Freq. 73  
RR 822  
PR 143  
QRSD 107  
QT 392  
QTcB 432  
QTcF 418  
--ASSE--  
P 14  
QRS 66  
T 84

Dip: Dip. Emergenza >



Disp:

Vel.: 25 mm/sec

Arti: 10 mm/mV

Tor.: 10,0 mm/mV

F 50-0,50-40 Hz W

PH10

CL P?